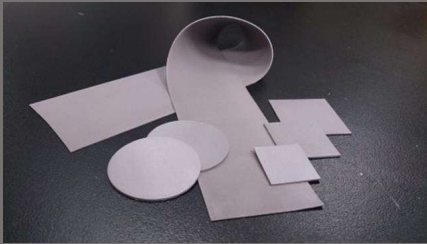


BANDO

High Thermal Conductive Sheet HEATEX™



HEATEX™ (BANDO's Thermal conductive Sheets) is a rubber sheet, which is the highest thermal conductivity in the market. As the heat can be transmitted efficiently from the heat source via HEATEX™ to the heat sink (housing), the performance can be dramatically improved. Also those parts which responsible for heat dissipation can be modified smaller or simplified.

Line-up

- Electric Insulate Type
 - TS103
 - TS107
 - TS121
- Electric Conductive Type
 - TS211

Feature

- We vertically aligned the heat transfer filler, which have an anisotropic thermal conductivity in the sheet thickness direction.
- High heat reliability
- High thermal conductivity, softness
- Flammability (UL94 Flammability test): V-0 equivalency

Application

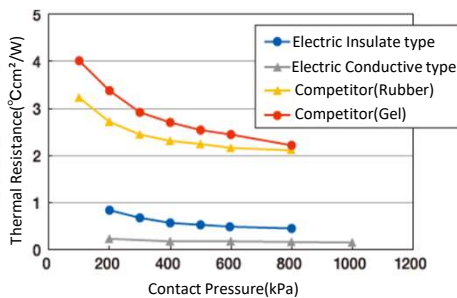
- BANDO's Thermal Conductive Sheet streamlines heat transfer from the source to the heat dissipation unit.

Bando Chemical
Thermal Management
Special Site

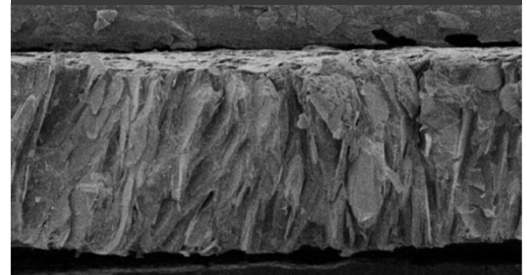


Electric Insulate type

■ General Properties

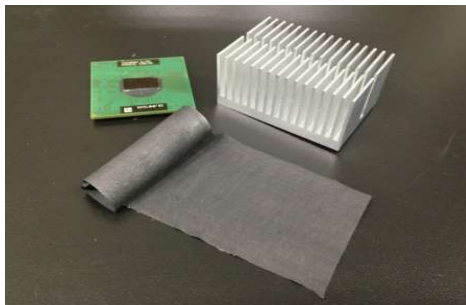


Cross Section

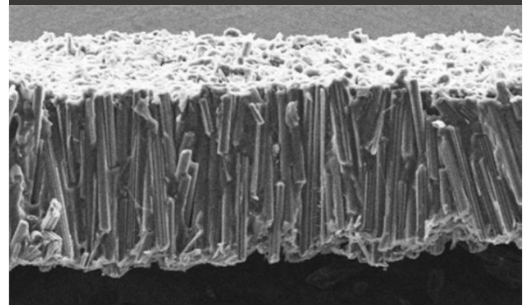


Electric Conductive type

■ 製品写真



Cross Section



Property table

	unit	Isolation type			Conductive type	
		TS103	TS107	TS121 (developing)	(developing)	
Filler	—	Boron Nitride			Graphite	
thickness	mm	0.3, 0.5, 1.0				
hardness	ASTM D5470	W/mK	9	9	6.5	17
	Asker C	—	70	55	30	45
Dielectric breakdown voltage	kV/mm	> 20			conductive	
Volume resistivity	Ω · cm	> 10 ¹³			conductive	
Flame retardance	UL94	V-0 Equivalent	V-0 Equivalent	V-0 Equivalent	V-0 Equivalent	

BANDO Chemical Industries, Ltd.

Y.Takahara yusuke.takahara@bandgrp.com C.W.Park chanwoo.park@bandgrp.com

2021PF-HTX01